

# Saint Martinique I

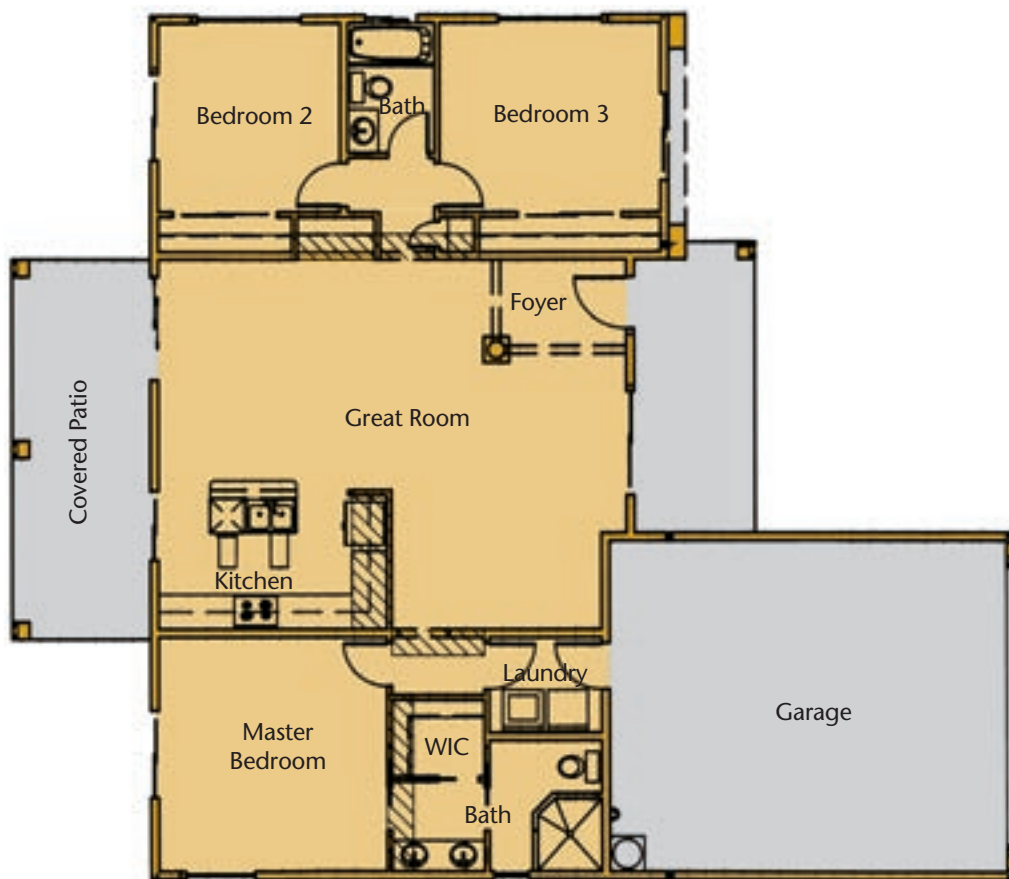


Experience the lifestyle of the master planned community of Desert Lakes in this spacious 1,440 square foot home with 3 bedrooms and 2 full baths.



Master planned golf course community features 146 acres of refreshing lakes and challenging, manicured greens.

- No association dues
- No course assessment fees
- Homes only development
- Lot size options
- Underground utilities
- Rental property management
- Minutes from fun and entertainment in Laughlin, Nevada



## Desert Greens HOMES & ESTATES

### DESERT RESORT PROPERTIES, INC.

George Sharma  
Designated Broker

91 London Bridge Rd., Ste 106  
Lake Havasu City, AZ 86403  
(928) 680-9222 • Fax: (928) 680-1088

### MODEL HOMES

2012 E. Desert Lakes Dr.  
Fort Mohave, AZ 86426  
1-866-DESERT-8 • (928) 768-1222  
Fax (928) 768-1015

[www.desertgreenshomes.com](http://www.desertgreenshomes.com)



# Saint Martinique I

1,440 sq. ft.  
3 bedrooms  
2 baths



## INTERIOR DETAILING

- Vaulted ceilings
- Pot shelves
- Raised panel oak cabinets  
*(choice of colors)*
- Ceramic tile floors  
and counter tops
- Walk-in closet  
*(in master bedroom)*
- Can lights in kitchen
- 22' covered patio  
*(off living room)*

## COMFORTS OF HOME

- Steel entry door
- Lever door knobs
- Deadbolts on exterior doors
- White appliances
- Self cleaning oven
- Dishwasher
- Micro hood
- Security System  
*(available as upgrade)*

## PLUMBING

- White MOEN fixtures  
in bath and kitchen
- Fiberglass tub shower combo  
in guest bath
- Tile walk-in shower  
*(in master bath)*
- Tile bath counters
- Drop in sinks in both baths  
*(double in master bath)*
- 50 gallon gas water heater
- 1.5 gallon flush water savers

## PREPLUMBED FOR

- Water softener
- Reverse osmosis
- Natural gas
- Outdoor sprinkler system

## PAINT AND STAINS

- Designer series color schemes  
*(flat or semi-gloss, two tone)*
- Flat white paint in Garage

## GAS HEATING & AIR CONDITIONING

- 3.5-ton 12-SEER split unit

## ROOF

- Tile, standard colors  
*(upgraded as on model)*

## STUCCO

- Choice of colors

## QUALITY CONSTRUCTION

- 25' driveway
- 23' deep garage
- 2" x 6" framing  
*(exterior & garage walls)*
- 2" x 4" framing  
*(interior walls)*
- Walkway  
*(from entry to driveway)*
- Driveway  
*(from garage to street)*

## INSULATION

- R-38 blown insulation  
*(in ceiling)*
- R-19 batt insulation  
*(in living areas)*
- R-11 batt insulation  
*(in garage walls)*

## WINDOWS

- Dual pane, insulated  
*(choice of colors)*

## ALLOWANCES

- \$13 per yard for carpet
- \$2 per square foot for tile  
*(installation included)*
- \$600 for lighting
- \$1,100 for appliances
- Up to 16' x 25' driveway

Floorplans are not to scale. All plans, specifications, options, features and details are subject to change at anytime without prior notice. Photos of model are for demonstration only.

Construction by:  
River Ridge Builders, Inc.  
Ed Navarro, General Contractor  
Arizona License No: 151956

*Desert Greens*  
**HOMES & ESTATES**

## MODEL HOMES

2012 E. Desert Lakes Dr.  
Fort Mohave, AZ 86426  
1-866-DESERT-8 • (928) 768-1222  
Fax (928) 768-1015

[www.desertgreenshomes.com](http://www.desertgreenshomes.com)