

CAYMAN BRAC

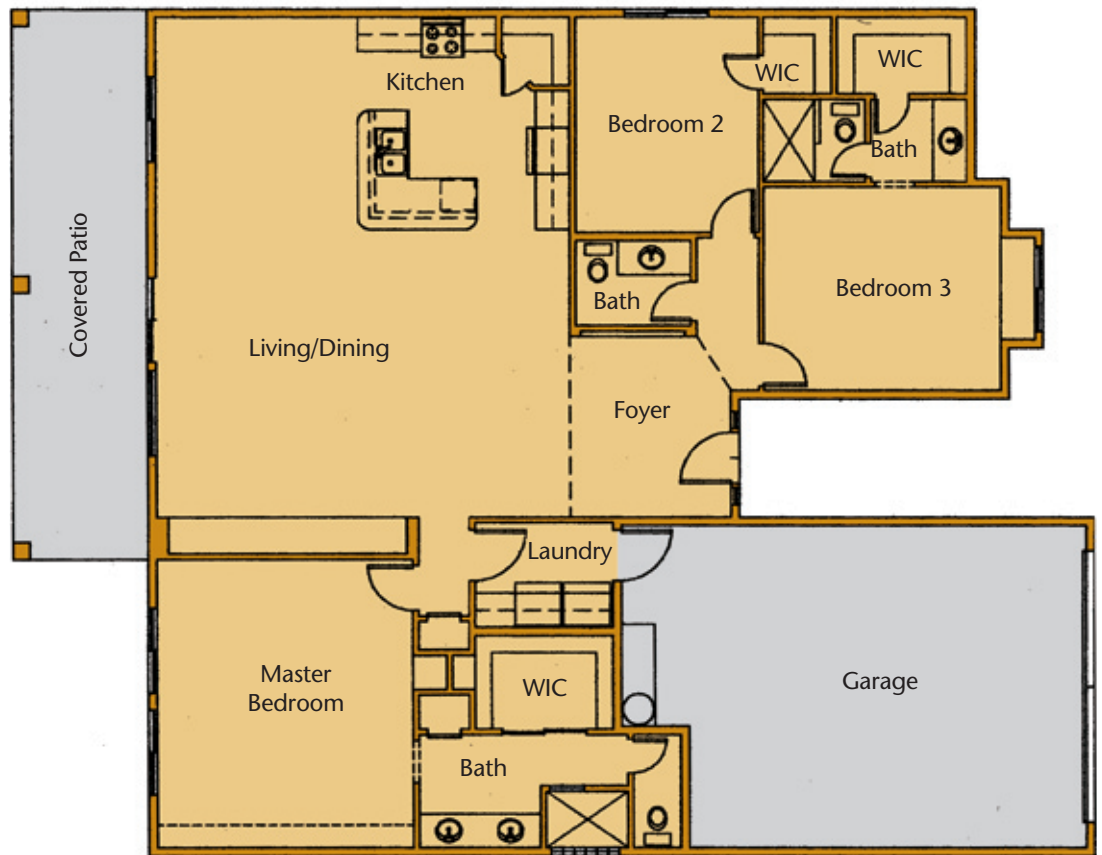


Experience the lifestyle of the master planned community of Desert Lakes in this luxurious 2,005 square foot home with 3 bedrooms and 2½ baths.



Master planned golf course community features 146 acres of refreshing lakes and challenging, manicured greens.

- No association dues
- No course assessment fees
- Homes only development
- Lot size options
- Underground utilities
- Rental property management
- Minutes from fun and entertainment in Laughlin, Nevada



Desert Greens
HOMES & ESTATES

DESERT RESORT PROPERTIES, INC.

George Sharma
Designated Broker

91 London Bridge Rd., Ste 106
Lake Havasu City, AZ 86403
(928) 680-9222 • Fax: (928) 680-1088

MODEL HOMES

2012 E. Desert Lakes Dr.
Fort Mohave, AZ 86426
1-866-DESERT-8 • (928) 768-1222
Fax (928) 768-1015

www.desertgreenshomes.com



CAYMAN BRAC

2,005 sq. ft.
3 bedrooms
2 1/2 baths



INTERIOR DETAILING

Vaulted ceilings
Pot shelves
Raised panel oak cabinets
(choice of colors)
Ceramic tile floors
and counter tops
Walk-in closets all bedrooms
Can lights in kitchen
32' covered patio
(off living/dining room)

COMFORTS OF HOME

Steel entry door
Lever door knobs
Deadbolts on exterior doors
White appliances
Self cleaning oven
Dishwasher
Micro hood
Security System
(available as upgrade)

PLUMBING

White MOEN fixtures
in bath and kitchen
Fiberglass tub shower combo
in guest bath
Tile walk-in shower
(in master and guest bath)
Tile bath counters
Drop in sinks in both baths
(double in master bath)
50 gallon gas water heater
1.5 gallon flush water savers

PREPLUMBED FOR

Water softener
Reverse osmosis
Natural gas
Outdoor sprinkler system

PAINT AND STAINS

Designer series color schemes
(semi-gloss)
Flat white paint in Garage

GAS HEATING & AIR CONDITIONING

4-ton 12-SEER split unit

ROOF

Tile, choice of colors
(upgraded as on model)

STUCCO

Choice of colors

QUALITY CONSTRUCTION

25' driveway
27' deep garage
2" x 6" framing
(exterior & garage walls)
2" x 4" framing
(interior walls)
Walkway
(from entry to driveway)
Driveway
(from garage to street)

INSULATION

R-38 blown insulation
(in ceiling)
R-19 batt insulation
(in living areas)
R-11 batt insulation
(in garage walls)

WINDOWS

Dual pane, insulated
(choice of colors)

ALLOWANCES

\$15 per yard for carpet
\$2 per square foot for tile
(installation included)
\$600 for lighting
\$1,100 for appliances
Up to 16' x 25' driveway

Floorplans are not to scale. All plans, specifications, options, features and details are subject to change at anytime without prior notice. Photos of model are for demonstration only.

Construction by:
River Ridge Builders, Inc.
Ed Navarro, General Contractor
Arizona License No: 151956

Models furnished by:


Lake Havasu City, AZ • (928) 855-6067


Desert Greens
HOMES & ESTATES

MODEL HOMES

2012 E. Desert Lakes Dr.
Fort Mohave, AZ 86426

1-866-DESERT-8 • (928) 768-1222

Fax (928) 768-1015

www.desertgreenshomes.com