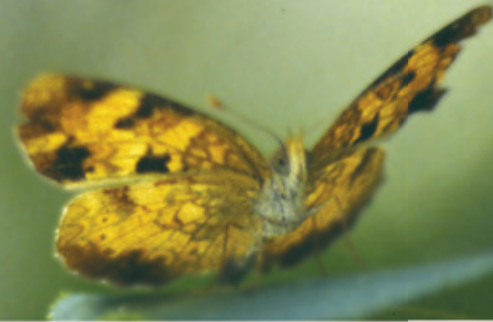


Antigua



Elevation A

Choice of Elevations

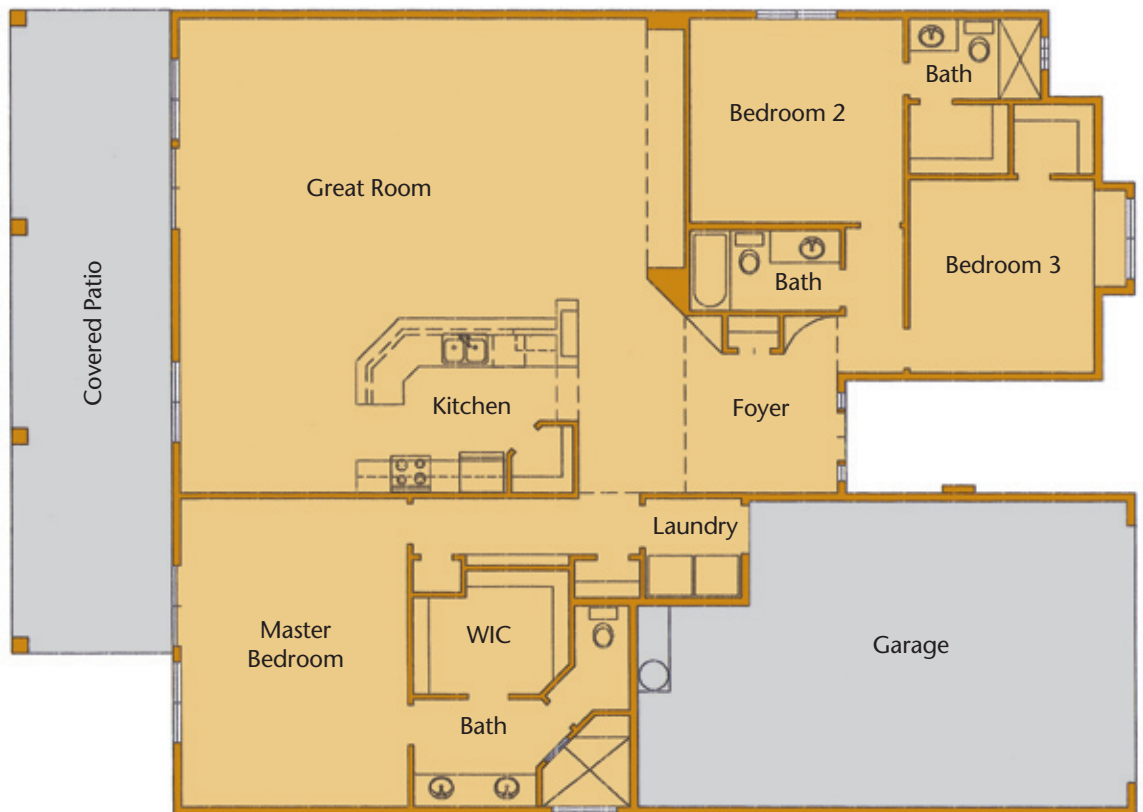
Elevation B

Experience the lifestyle of the master planned community of Desert Lakes in this spacious 2,200 square foot home with 3 bedrooms and 3 full baths.



Master planned golf course community features 146 acres of refreshing lakes and challenging, manicured greens.

- No association dues
- No course assessment fees
- Homes only development
- Lot size options
- Underground utilities
- Rental property management
- Minutes from fun and entertainment in Laughlin, Nevada



Desert Greens
HOMES & ESTATES

DESERT RESORT PROPERTIES, INC.

George Sharma
Designated Broker

91 London Bridge Rd., Ste 106
Lake Havasu City, AZ 86403
(928) 680-9222 • Fax: (928) 680-1088

MODEL HOMES

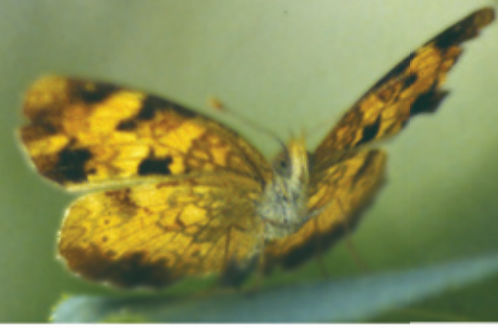
2012 E. Desert Lakes Dr.
Fort Mohave, AZ 86426
1-866-DESERT-8 • (928) 768-1222
Fax (928) 768-1015

www.desertgreenshomes.com



2,200 sq. ft.
3 bedrooms
3 baths

Antigua



INTERIOR DETAILING

- Vaulted ceilings
- Pot shelves
- Raised panel oak cabinets
(choice of colors)
- Ceramic tile floors
and counter tops
- Walk-in closets
(in all bedrooms)
- Can lights in kitchen
- 40' covered patio
(off living/dining/master bed)

COMFORTS OF HOME

- Steel entry door
- Lever door knobs
- Deadbolts on exterior doors
- White appliances
- Self cleaning oven
- Dishwasher
- Micro hood
- Security System
(available as upgrade)

PLUMBING

- White MOEN fixtures
in bath and kitchen
- Fiberglass tub shower combo
in guest bath
- Tile walk-in shower
(in master bath)
- Tile bath counters
- Drop in sinks in both baths
(double in master bath)
- 50 gallon gas water heater
- 1.5 gallon flush water savers

PREPLUMBED FOR

- Water softener
- Reverse osmosis
- Natural gas
- Outdoor sprinkler system

PAINT AND STAINS

- Designer series color schemes
(semi-gloss)
- Flat white paint in Garage

GAS HEATING & AIR CONDITIONING

- 5-ton 12-SEER split unit

ROOF

- Tile, standard colors
(upgraded as on model)

STUCCO

- Choice of colors

QUALITY CONSTRUCTION

- 25' driveway
- 30' deep garage
- 2" x 6" framing
(exterior & garage walls)
- 2" x 4" framing
(interior walls)
- Walkway
(from entry to driveway)
- Driveway
(from garage to street)

INSULATION

- R-38 blown insulation
(in ceiling)
- R-19 batt insulation
(in living areas)
- R-11 batt insulation
(in garage walls)

WINDOWS

- Dual pane, insulated
(choice of colors)

ALLOWANCES

- \$15 per yard for carpet
- \$2 per square foot for tile
(installation included)
- \$600 for lighting
- \$1,100 for appliances
- Up to 16' x 25' driveway

Floorplans are not to scale. All plans, specifications, options, features and details are subject to change at anytime without prior notice. Photos of model are for demonstration only.

Construction by:
River Ridge Builders, Inc.
Ed Navarro, General Contractor
Arizona License No: 151956

Models furnished by:


Lake Havasu City, AZ • (928) 855-6067



MODEL HOMES

2012 E. Desert Lakes Dr.
Fort Mohave, AZ 86426
1-866-DESERT-8 • (928) 768-1222
Fax (928) 768-1015

www.desertgreenshomes.com